



# CDR Group

proudly presents

## Reveal 1.5 for MapInfo

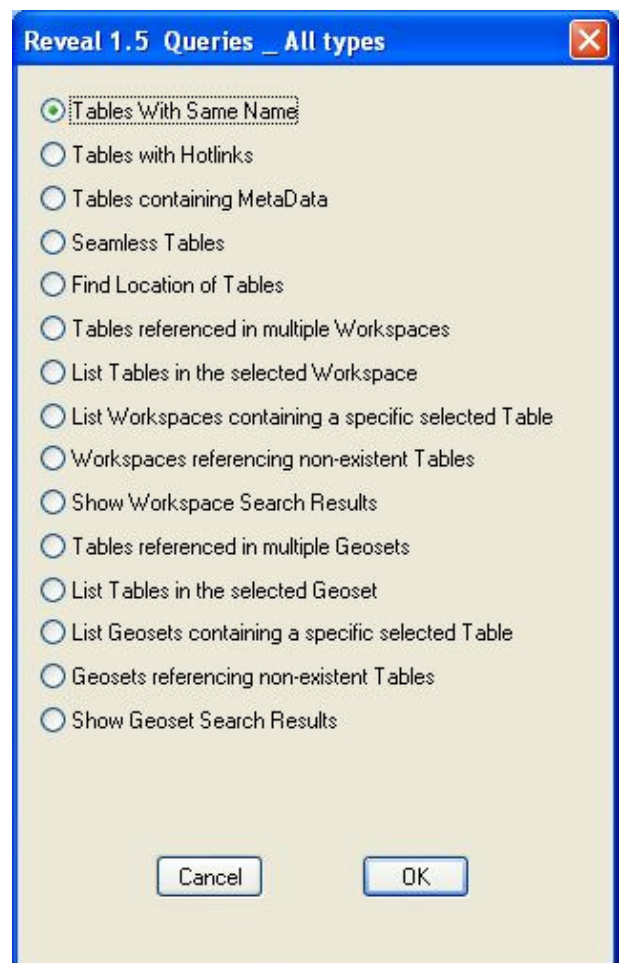
CDR Group's workspace and table analysis tool, Reveal, gives greater insight into an organisation's MapInfo workspaces, geosets and tables. The tool is designed to help audit, manage and tidy-up the abundance of files being generated by many users. All tables, geosets and workspaces within a user specified directory structure are listed, along with any tables that are referenced by those workspaces.

A number of standard queries are provided:

- e.g. Workspaces referencing tables which no longer exist.
- Tables with metadata.
- Tables which use hotlinks.
- Duplicate table names.

Reveal works entirely within the MapInfo Professional environment and produces a number of standard MapInfo tables that can be browsed as normal. Data recorded by the tool includes the filename, path, table name and alias as used by MapInfo Professional. Users can create their own queries to find data relevant to themselves and their particular issues. Where a number of servers need to be checked lists of workspaces and/or geosets can be appended together.

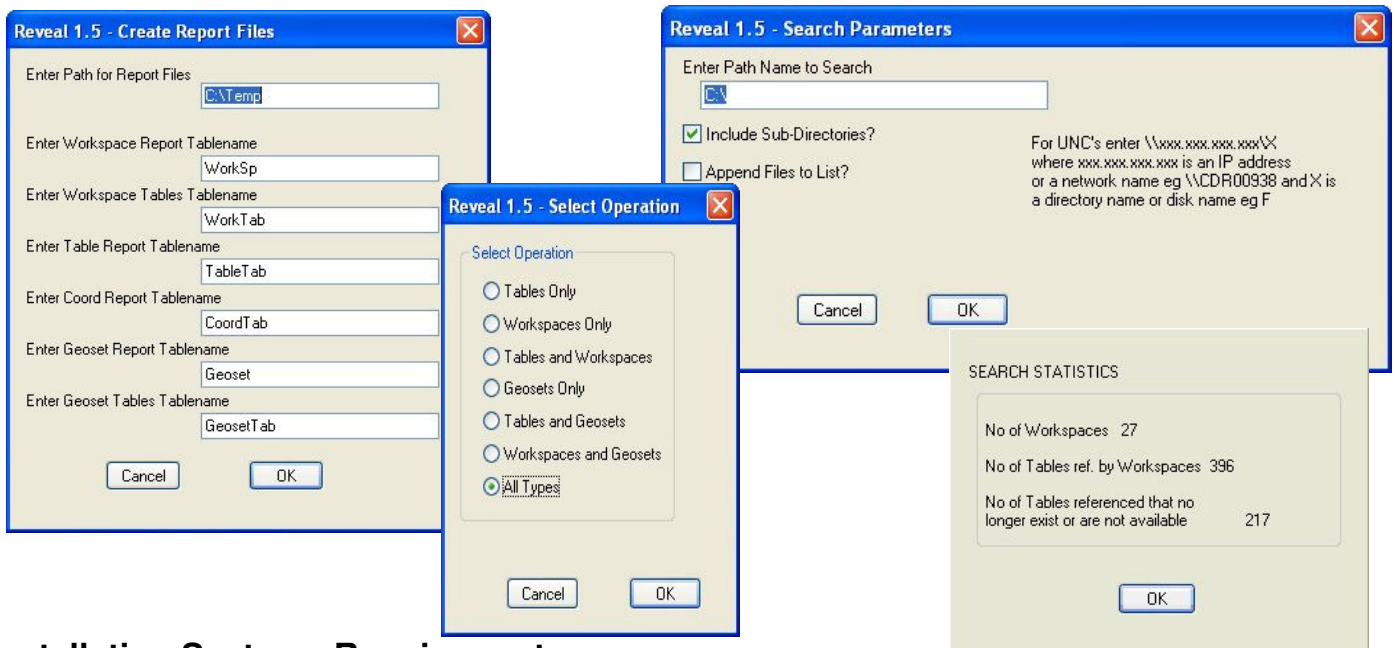
It is possible to specify searches covering a local disk, a network directory or even an IP address.



# Reveal

## Typical Uses

- De-duplication of external data – e.g. OS mapping
- Rationalising server data without invalidating workspaces
- Checking links and references are still valid
- Moving data from one server to another
- Cataloguing your MapInfo data at regular intervals
- Checking who is still using a MapInfo table
- Cleaning up data
- Company or departmental re-organisations



## Installation Systems Requirements

Reveal does not require any additional system requirements above the minimum set for MapInfo Professional v8.5 running Windows NT v4, Windows XP, Vista or Windows 7.

## Pricing

Reveal costs £500 + VAT for a single user licence. Annual maintenance and technical support £100 + VAT per annum.

## Note

When running Reveal it is necessary that it is run from a Windows account with sufficient privileges to view any directories that are referenced by your workspaces.

CDR Group is a Pitney Bowes Software Premier Partner and develops a number of MapInfo Maplets applications and bespoke utilities. For details of these and CDR's other services, please contact John levers on 01433 621282 or e-mail [sales@cdrgroup.co.uk](mailto:sales@cdrgroup.co.uk).

*Doc: MIIS-84.DOC Ver: 1.41 Date: 31<sup>st</sup> January 2012*



### CDR Group

Eccles House, Eccles Lane, Hope, Hope Valley. S33 6RW. U.K.  
Tel: 01433 621282  
Fax: 01433 621292  
EMAIL address: [sales@cdrgroup.co.uk](mailto:sales@cdrgroup.co.uk)  
Web site: <http://www.cdrgroup.co.uk>

