

Spring 2018

CDR News



We all survived GDPR 2018!

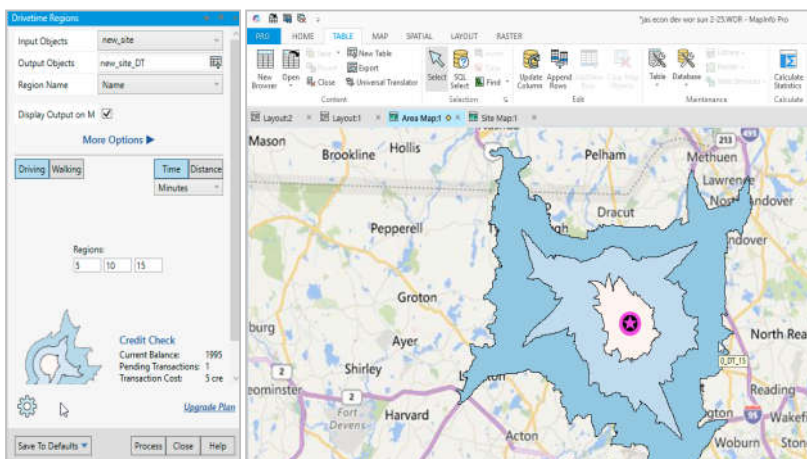
Which is great because everyone now receiving our emails and newsletters are doing so because you want to hear from us! Although I'm still getting the same amount of Bank of Nigeria emails as before - I guess the spammers didn't get the memo...

We have undertaken our Data Audits and adjusted our working processes to be compliant with the new Data Protection Act of 2018 (which incorporates the GDPR). It has taken some adjustment and re-focus to the new regulations, which have a strong emphasis on security and consent. And it was good to see that Pitney Bowes were at the forefront of compliance and guidance for the new regulations. Applications such as Confirm have all been passed as fit for compliance.

GDPR aside, CDR has leapt into Spring busier than usual with lots of new software releases as well as events and Open Days. The last few months topics have been MapInfo Pro Version 17 and Latest Ordnance Survey Mapping Products which were both well attended - we hope you found them useful.

The beginning of June saw the annual MapInfo User Group UK meeting in London which provided a jam packed day of seminars as well as networking, product demos and lots of experts around for questions. Pitney Bowes were fantastic hosts as usual and provided wonderful spreads throughout the day from coffee and pastries to calamari and couscous. Speakers included Jim Stone, MapInfo Senior Product Manager, who flew over from Boston, as well as representatives from Buchanan Computing, Gamma, CDR, Europa Technologies and a fascinating talk from the Metropolitan Police. It was lovely to meet those of you who managed to attend (and great to put names to faces!).

MapInfo Pro v17 Released June 18



The latest MapInfo software update has brought with it an array of exciting features. This time, the extensive beta programme by end-users who reviewed and tested every inch of an early release of Mapinfo Pro, whilst Pitney Bowes engineered, designed and refined.

The result is a program that not only halves the speed of everyday GIS processes but is more user-friendly and intuitive than ever before. Each tool can be found with less clicks and each process loads in record time.

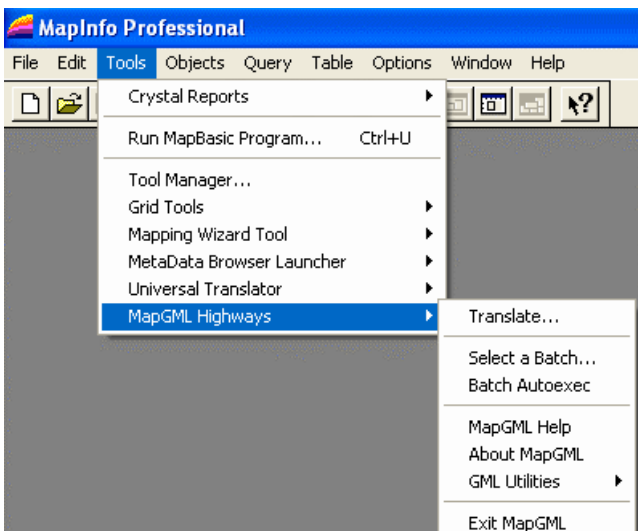
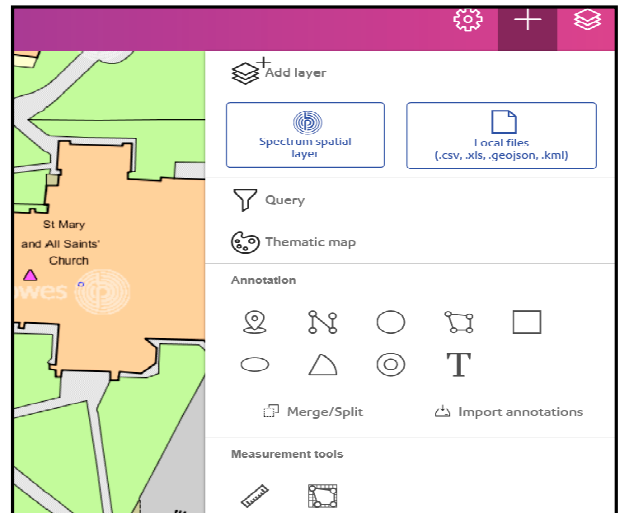
Pitney Bowes have responded to user feedback by providing a version that dramatically improves user's efficiency and speed. These well thought out additions include an inbuilt drivetime tool to measure either time or distance from a point (see screenshot above), a QuickSearch toolbar to rapidly find and launch commands, customisable mini toolbars and SmartText layout design options to apply pre-populated macros to your layout templates.

Raster data files that were impossible to open in previous versions now load in seconds thanks to a complete backend overhaul. SQL queries too, load in half the time, leaving you spending less time staring at a screen and more time finishing projects.

Spectrum Spatial Analyst v12.2 released April 18

Spectrum Spatial Analyst v12.2 has been released this spring too with the most impressive addition being **SSA Extensibility**. SSA has now been opened up to allow third parties to develop their own extensions and components to customise their product. This new feature is available for v12.2 with a developer licence. SSA has also improved usability and fixed common bugs and complaints with the previous version. Useful improvements include:

- **Multi-Select feature** which allows users to select multiple items in a layer to show in the information panel
- **Adding additional Layers** this allows users to open other Layers from Spectrum, as well as adding ad-hoc local files that have geo-referencing such as X and Y co-ordinates.
- **Map Information Template Designer** which allows administrators to create customised templates and set properties for tables including bar graphs, pie charts and street imagery - no programming involved!



MapGML now supports OS Highways!

MapGML's latest release (version 7.0) now includes full compatibility with popular Ordnance Survey mapping products including OS Highways, OS MasterMap Topo, ITN, and VectorMap Local. A new FILTER box in the Translate dialogue allows you to run translation processes for each OS feature file and a new Batch File tool automates this process, allowing you to set up back to back file translations from feature files to style files. With some OS Highway maps now having over 25 separate features, the new Batch Tool is a fantastic timesaving tool and well worth the upgrade in itself!

MapGML is an add-on that translates Ordnance Survey .GML files (Geography Markup Language) into native MapInfo .TAB files so that they can be used effectively in MapInfo Pro.



Eccles House, Eccles Lane,
Hope, Hope Valley, S33 6RW
Phone: 01433 621282
Email: sales@cdrgroup.co.uk
Website: www.cdrgroup.co.uk

Mapping the way forward

Emma joins CDR Group

Hi, I'm Emma and I joined CDR in April this year after moving out to the Peak District in search of a more tranquil lifestyle. I live in a cottage in the Hope Valley with 360 panoramic views of the hills and wake up to a breathtaking view every morning.

I've always been passionate about maps and am a keen orienteer, fell runner and peak grabber although my degree was in illustrative maps and so I'm a newcomer to GIS. Please feel free to grill me on anything MapInfo related - by the next newsletter I'll be Level=Expert!

