

# This Week's Wisdom:

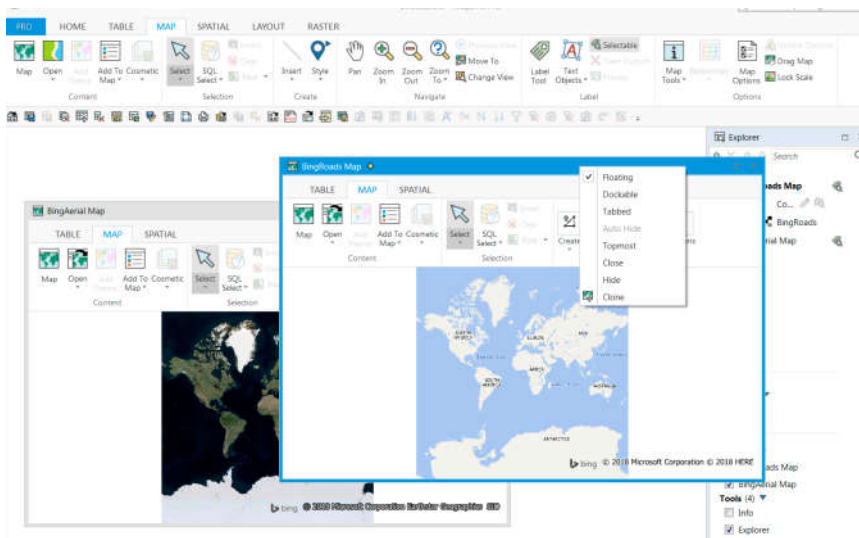
## Part 1:

## Overcoming objections when moving to 64-bit

We know it's not always plain sailing trying to move from 32-bit to 64-bit MapInfo. Here's the most common objections and the solutions:

### We still have 32-bit computers

Apple and Linux are already cutting their support for 32-bit software. How long will it be before Microsoft follow suit? Besides, 32-bit is so, so slow! How many hours of downtime does your GIS department have each week waiting for functions to complete? How long do you spend watching a progress bar? Time is money after all. Perhaps when you add up all the hours, your provisioning team will realise that upgrading your PCs is the cheaper option.



### I prefer toolbars to ribbons / I find ribbons confusing

We get it - all the buttons have changed. Fortunately, version 17 comes with an amazing new tool - the Quicksearch box - which allows you to search and select the tool you need to use. 64-bit versions of MapInfo also give you the flexibility to choose between floating or tabbed windows along with personalised shortcuts and toolbars. You can fully customise your interface to make sure that all your favourite tools are right where you need them.

*(< v17.01 with workspaces set up as floating windows. You can choose from floating, tabbed and dockable by right clicking on the top bar)*

### We have old add-ons, mapbasic etc that won't work in 64-bit

That's okay - you can install previous versions of MapInfo on your PC if you want to! A node-locked licence is defined as either one named workspace or one named user, so you can have multiple versions of MapInfo installed under one licence. You can still benefit from all the new features in v17.01 day to day and load up your older version on an adhoc basis to carry out a specific task.

### I don't want to change - "If it ain't broke"

Pitney Bowes employ thousands of staff the world over who are tirelessly working to better MapInfo EVERY SINGLE DAY. Those patches and version updates? Every single one is an improvement! Pitney Bowes are constantly revising and updating the software on the back of customer feedback (check out Li360). Why would you want to stand still when the rest of the GIS community are moving forwards?

Eccles House, Eccles Lane,  
Hope, Hope Valley, S33 6RW  
Phone: 01433 621282  
Email: [sales@cdrgroup.co.uk](mailto:sales@cdrgroup.co.uk)  
Website: [www.cdrgroup.co.uk](http://www.cdrgroup.co.uk)

