

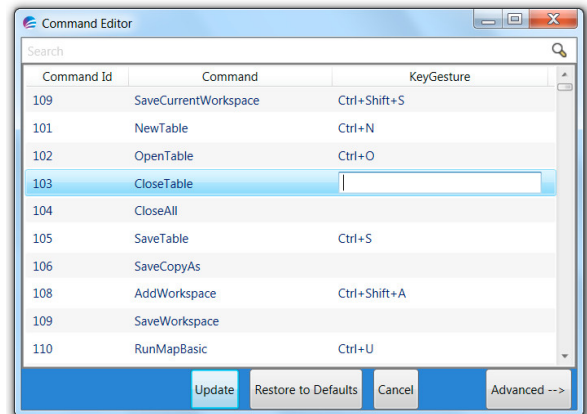
# This Week's Wisdom:

## Keyboard Shortcuts in MapInfo Pro 64-bit

MapInfo's ethos is all about achieving more in fewer clicks. You can definitely start working faster and smarter by integrating some of these keyboard shortcuts into your GIS routines.

Below are a list of our favourites however, we realise they might not hit the spot for the type of work you're performing with MapInfo. Fortunately, MapInfo has the perfect tool: The Command Editor Tool.

<b>Key</b>	<b>Action</b>
Ctrl+O	<i>Open Table</i>
Ctrl+W	<i>Clear Selection</i>
Ctrl+N	<i>New Table</i>
Ctrl+U	<i>Run MapBasic Program</i>
Ctrl+K	<i>Save Workspace</i>
Ctrl+Shift+N	<i>Add Node</i>
Ctrl+Shift+I	<i>Info Tool</i>
F3	<i>New Map Window</i>
F4	<i>Open a Browser Window</i>
F5	<i>New Layout Window</i>
F8	<i>Text Style</i>
Alt+F8	<i>Symbol Style</i>
F9	<i>Create Thematic Map</i>
T	<i>Trace</i>
N	<i>AutoNode</i>
C	<i>Cross Hairs</i>
S	<i>Snap to Nodes</i>
+ / -	<i>Map Zoom</i>
Middle Mouse Click	<i>Pan</i>
Esc	<i>Returns cursor to the Select Tool</i>



This tool can be found in your Tool Extensions Manager (Ctrl+Shift+U). Not only does it show every keyboard shortcut available to you but it also allows you to customise the key gesture for each one. You can add in extra keyboard shortcuts for your most frequent tools, even if they aren't included as standard. The Command Editor Tool allows you to customise your MapInfo software entirely to your needs so that all your repetitive GIS functions can be performed at the press of a key.

If you don't want to get all muddled up making your own shortcuts, you can of course, stick with the MapInfo standard ones. And just in case you forget which key does what, every tool displays a description and the shortcut when you hover over them.

